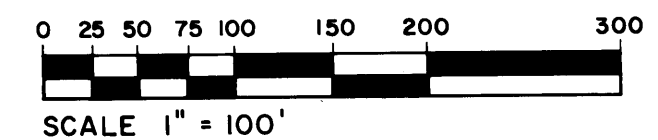


# PLAT NO. 4 SAILFISH POINT P.U.D.

LYING IN FRACTIONAL SECTIONS 8 AND 17, TOWNSHIP 38 SOUTH, RANGE 42 EAST, MARTIN COUNTY, FLORIDA

DECEMBER, 1981



SHEET 2 of 2

I, LOUISE V. ISAACS, CLERK OF THE CIRCUIT COURT OF MARTIN COUNTY, FLORIDA, HEREBY CERTIFY THAT THIS PLAT WAS FILED FOR RECORD IN PLAT BOOK 8, PAGE 88, MARTIN COUNTY, FLORIDA, PUBLIC RECORDS, THIS DAY OF \_\_\_\_\_, A.D. 1981.

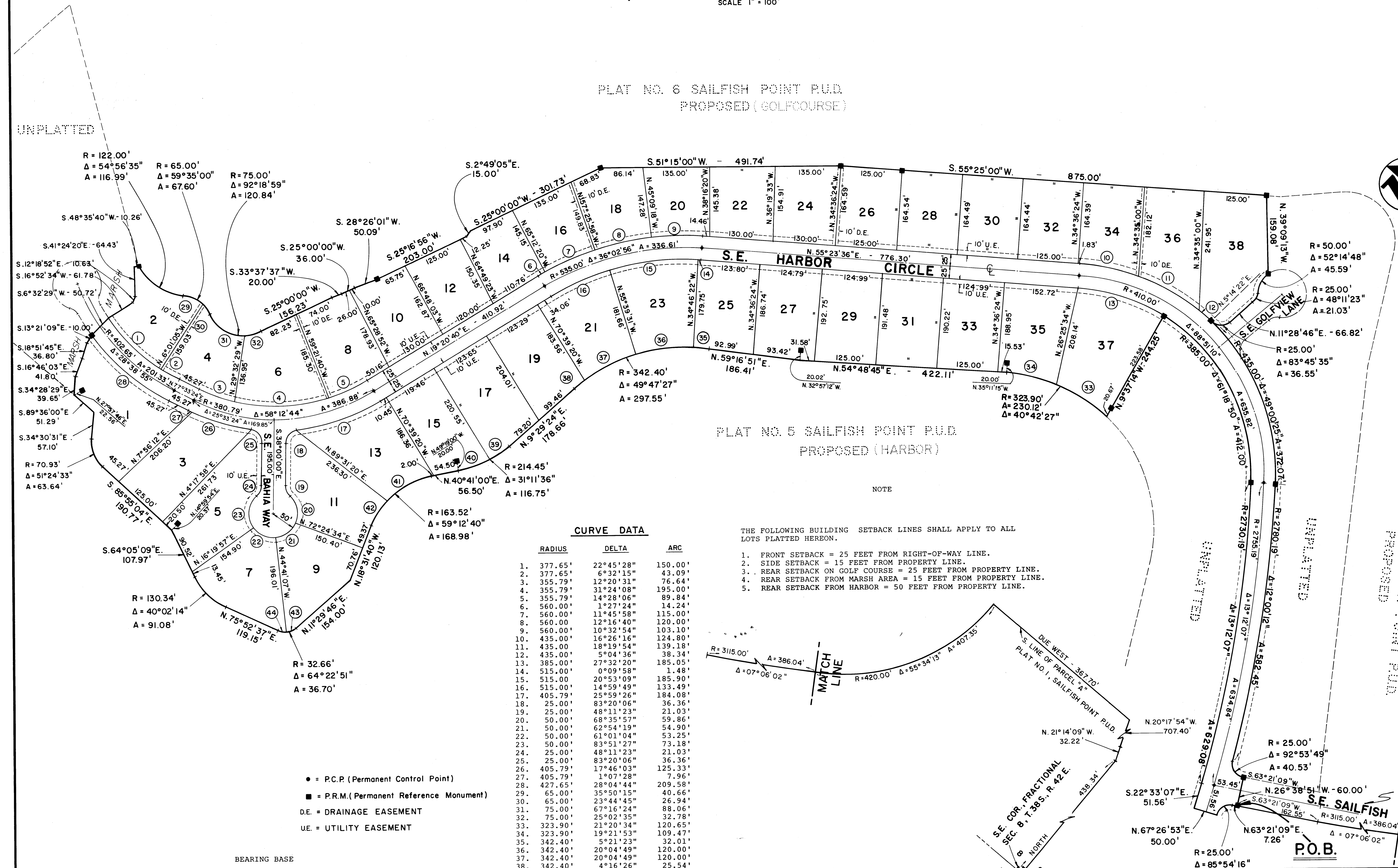
LOUISE V. ISAACS, CLERK CIRCUIT COURT MARTIN COUNTY, FLORIDA

BY \_\_\_\_\_ DEPUTY CLERK

FILE NO. \_\_\_\_\_

PLAT NO. 6 SAILFISH POINT P.U.D. PROPOSED (GOLFCOURSE)

PLAT NO. 5 SAILFISH POINT P.U.D. PROPOSED (HARBOR)



**CURVE DATA**

	RADIUS	DELTA	ARC
1.	377.65'	22°45'28"	150.00'
2.	377.65'	6°32'15"	43.09'
3.	355.79'	12°20'31"	76.64'
4.	355.79'	31°24'08"	195.00'
5.	355.79'	14°28'06"	89.84'
6.	560.00'	1°27'24"	14.24'
7.	560.00'	11°45'58"	115.00'
8.	560.00'	12°16'40"	120.00'
9.	560.00'	10°32'54"	103.10'
10.	435.00'	16°26'16"	124.80'
11.	435.00'	18°19'54"	139.18'
12.	435.00'	5°04'36"	38.34'
13.	385.00'	27°32'20"	185.05'
14.	515.00'	0°09'58"	1.48'
15.	515.00'	20°53'09"	185.90'
16.	515.00'	14°59'49"	133.49'
17.	405.79'	25°59'26"	184.08'
18.	25.00'	83°20'06"	36.36'
19.	25.00'	48°11'23"	21.03'
20.	50.00'	68°35'57"	59.86'
21.	50.00'	62°54'19"	54.90'
22.	50.00'	61°01'04"	53.25'
23.	50.00'	83°51'27"	73.18'
24.	25.00'	48°11'23"	21.03'
25.	25.00'	83°20'06"	36.36'
26.	405.79'	17°46'03"	125.33'
27.	405.79'	1°07'28"	7.96'
28.	427.65'	28°04'44"	209.58'
29.	65.00'	35°50'15"	40.66'
30.	65.00'	23°44'45"	26.94'
31.	75.00'	67°16'24"	89.06'
32.	75.00'	25°02'35"	32.78'
33.	323.90'	21°20'34"	120.65'
34.	323.90'	19°21'53"	109.47'
35.	342.40'	5°21'23"	32.01'
36.	342.40'	20°04'49"	120.00'
37.	342.40'	20°04'49"	120.00'
38.	342.40'	4°16'26"	25.54'
39.	214.45'	12°14'14"	45.80'
40.	214.45'	18°57'22"	70.95'
41.	163.52'	37°57'47"	108.34'
42.	163.52'	21°14'53"	60.64'
43.	32.66'	35°44'08"	20.37'
44.	32.66'	28°38'43"	16.33'

- NOTE
- THE FOLLOWING BUILDING SETBACK LINES SHALL APPLY TO ALL LOTS PLATTED HEREON.
- FRONT SETBACK = 25 FEET FROM RIGHT-OF-WAY LINE.
  - SIDE SETBACK ON GOLF COURSE = 15 FEET FROM PROPERTY LINE.
  - REAR SETBACK FROM MARSH AREA = 15 FEET FROM PROPERTY LINE.
  - REAR SETBACK FROM HARBOR = 50 FEET FROM PROPERTY LINE.
  - REAR SETBACK FROM HARBOR = 50 FEET FROM PROPERTY LINE.

- = P.C.P. (Permanent Control Point)
- = P.R.M. (Permanent Reference Monument)
- D.E. = DRAINAGE EASEMENT
- U.E. = UTILITY EASEMENT

BEARING BASE  
ALL BEARINGS SHOWN HEREON ARE RELATIVE TO THE BEARINGS SHOWN ON PLAT NO. 1, SAILFISH POINT PLAT BOOK 8, PAGE 10.

LINDAHL, BROWNING, FERRARI & HELLSTROM, INC.  
Consulting Engineers, Planners & Surveyors  
426 INDIANTOWN ROAD - 951 COLORADO AVENUE  
JUPITER, FLORIDA 33458 STUART, FLORIDA 33494